

# Drive Away **Turbo CNG** Bus Chassis Range



**Now with Increased warranty of  
5 years on Engine and Transmission**



Also available in diesel.



Box type cross-section  
chassis for extra strength.



Time tested high performance  
engine with high fuel efficiency.

# TECHNICAL SPECIFICATIONS

## Drive Away **CNG** Bus Chassis

Model Name	COSMO NG	SARTAJ NG	PRESTIGE NG	SUPREME NG	SAMRAT NG
Engine Description	SLT NG6 BS-VI				
Engine Type	Dedicated CNG with Multi Point Rail Fuel Injection with TurboCharger & Inter Cooler				
Engine Cubic Capacity	3455				
Engine Power	80 kW (107 hp) @ 2600-3000 rpm				
Engine Torque	315 Nm @ 1400-1800 rpm				
GVW (kg)	5740	6140	6790	8000	8720
Wheelbase (mm)	3335			4760 / 4240	5100 / 4760 / 4240
Tyre Size	7.50X16-16PR	8.25X16-16PR	7.50X16-16PR		8.25X16-16PR
No of Tyres	4+1		6+1		
Overall Length (mm)	6219	5879	6219	8499 / 7667	8944 / 8499 / 7667
Overall Width (mm)	2000				
Front Overhang (mm)	1044				
Rear Overhang (mm)	1840	1500	1840	2695 / 2200	2800 / 2695 / 2383
Brakes	Hydraulic Brakes				Air Brakes
CNG Cylinders Capacity	240 litres		360 or 480 litres		



# Presenting India's 1st Turbo CNG Engine

Deceleration Fuel Cut-off with Multi Point Fuel Injection to increase Engine Life & Boost Fuel Efficiency.

Top Coil-on Plug for Easy Fault Diagnosis System

Three-layered High Pressure Filter for Long Life of Engine Components

Robust Electronic Control Module for quick Fault Finding, Setting parameters like speed limit, fuel economy etc and Auto-fuel Cut off.

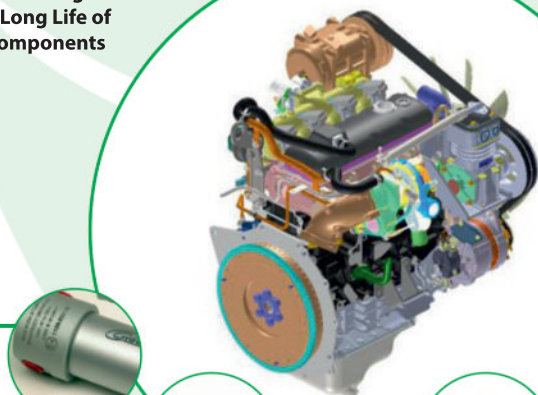
SS Tubing & Fitting for Contamination free CNG Supply

Long-lasting & Noise-free Gas Injectors

Safest Cylinder Valves with 180 degree Operational Knob with all Safety Features

Heavy Duty Dual Filling Nozzle to avail access to all types of CNG Stations

Turbo Boost Engine to increase Engine Power for Higher Loads.



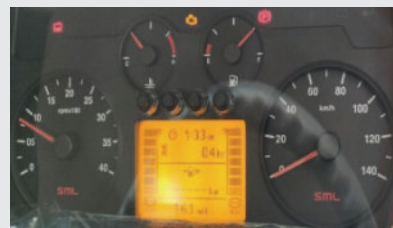
## HIGHLIGHTS



Ultra modern state of the art manufacturing facility as per International standards



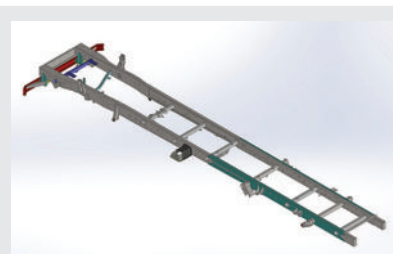
Integrated joint-less dual filling valve with spring-free patented magnetic technology for faster and silent refilling.



CAN Based Meter Cluster with Multi-info Display and Integrated CNG fuel digital indicator



High Performance Multi-Point Fuel Injection with Turbocharger & Intercooler for Better Pickup and Fuel Efficiency



Durable, Strong and Heavy Duty Box type Chassis Frame



Aesthetically Designed Tilt and Telescopic Steering for Driving Comfort



**Disclaimer :** The specifications may change without any prior notice, as per the company's policy of continuous improvement of its products/services. The pictures used are for indicative illustration purpose only, actual product may vary. All cargo dimensions are for quick reference purpose only.

## SML BUSES COME WITH ADVANCED TELEMATICS



### TRACK AND TRACE FEATURE

Real-time updates on the vehicle's condition. These details are systematically categorized, facilitating users in efficiently monitoring vehicles on the portal.



### REAL TIME VEHICLE LOCATION

SML Saarthi picks up vehicle location and display it directly over the map



### NEAR BY

Helps you in finding the nearest dealer showroom, service center, spare parts seller & local mechanics at the push of a button



### REPORT

One-demand Daily ignition Report & Trip Summary Report along with through route playback option and drive behaviour.



### REMINDER

Get reminder for schedule service based on either the time period or the km's covered by the vehicle whichever is earlier.



### ALERT TAB

Real time Exception alert like over speed, engine idling, harsh braking, high acceleration, vehicle battery health and engine on/off.



### FUEL AND ADBLUE LEVEL

Fuel and Adblue are used to view real-time as well as the trip's details for the vehicle regarding the Fuel and Adblue.

With the help of the graph a user can check the details regarding the stats and act upon them timely.



### GEOFENCE SERVICES

Geo Fence allows users to create defined areas with the specified boundaries, serving as designated starting or ending points for the feature "routes". Users receive alerts when a vehicle enters or exits these defined areas, offering enhanced monitoring and security functionalities.

## WARRANTY\*

- Engine & Transmission : upto 5 years for unlimited kilometers run.
- Vehicle & Differential : upto 2 years for unlimited kilometers run.



**SML VISHWAS**  
Drive More, Earn More, Rest we take care

**SML EXTEND**  
Extended warranty for extra miles.

**SML XCHANGE**  
Exchange Affordability at Your Fingertips



**SML ISUZU LTD.**

Corporate Office: 204-205, Sector 34-A, Chandigarh-160022  
Website: [www.smlisuzu.com](http://www.smlisuzu.com)

Visit Us: [f @smlisuzuofficial](https://www.facebook.com/smlisuzuofficial) [i @smlisuzuofficial](https://www.instagram.com/smlisuzuofficial) [in @company/sml-isuzu-ltd](https://www.linkedin.com/company/sml-isuzu-ltd)

Pan India Sales, SML Direct #93198 41155 India 24x7 Service No. # 1800 419 8086 (Toll Free)

Connect with us on WhatsApp via



Missed Call at  
9319871155



Send "Hi" message  
on Whatsapp #9988224365



Type [bit.ly/SMLISUZU](https://bit.ly/SMLISUZU)  
on web browser

**Authorised Dealer**